

Project Portfolio Management



**Addressing avoidable errors
that may be costing you time
and money on your projects:**

The annual growth rate of the Australian construction and engineering industry has been notably slower than other industries, having been worse impacted by the pandemic. In fact, **construction in Australia dropped by 4.8% in December 2020, accounting for \$21,306.5m.**

As a result, construction organisations have faced increased pressure to up the productivity and efficiency of their processes to remain competitive. So, as organisations work to find a new normal in their operations, it is crucial they adopt technologies that enable streamlined operations and increased efficiencies.

The Asite platform provides cloud-based software that allows collaboration, secure visibility, communication, and control across all stages in the project lifecycle. From design and preconstruction to construction and asset management, Asite offers solutions to increase productivity. This whitepaper will explore how users can boost their productivity, eliminate time-wasting, and reduce unnecessary expenditure in their capital projects with the Asite Platform.

We've chosen to identify two significant contributors to poor productivity across capital projects – avoidable rework and poor time management. These issues have been highlighted throughout this whitepaper to demonstrate how technological adoption can transform the construction industry.

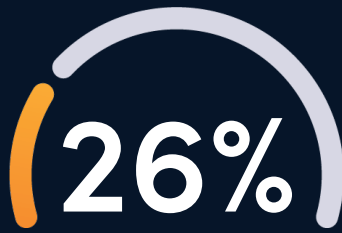


Rework:

Manifest as much as



of contractual
value



Attributed to poor
communication



Attributed to poor
project information

"Asite has helped to achieve transparency between all parties within the Design Team and generally throughout the construction process. Room for error is minimalised and communication enhanced to ensure efficient project delivery."

- Rutvig Vaid, Senior Document Controller, Henley Construct Ltd.

The Australian construction industry has identified that rework on projects can hurt contractor margins by up to 30%, affecting overall labour costs and damaging project timelines through the need to action the rework required.

26% of organisations attribute additional rework to poor communication between stakeholders. This metric involves issues such as inadequate information management and sharing, uncollaborative workspaces, and a lack of visibility in the design stages of a project – all of which leads to errors onsite.

Organisations also attribute 22% of rework to poor project information, including out-of-date or inaccessible project data. To operate within the agreed parameters

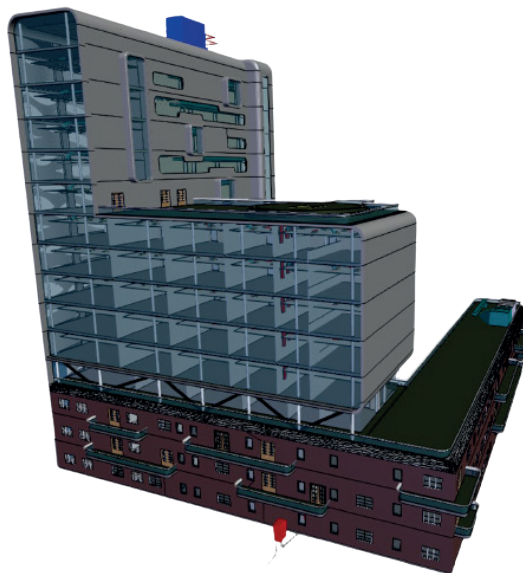
of the project and remain productive throughout the asset lifecycle, project teams require the most recent project information. Failure to provide this causes significant errors, leading to rework.

The Asite platform provides a Common Data Environment (CDE) equipped with solutions to address these issues. The capabilities present throughout the software, including the Asite collaborative Building Information Modeling (cBIM), Contract Management, and Visual Workflows solutions, are proven to reduce the amount of rework required.

"Asite has delivered significant time and cost benefits to BAA's projects, typically reducing out-turn costs by 2%" - Matthew Riley, Commercial Director for Terminal 5, BAA

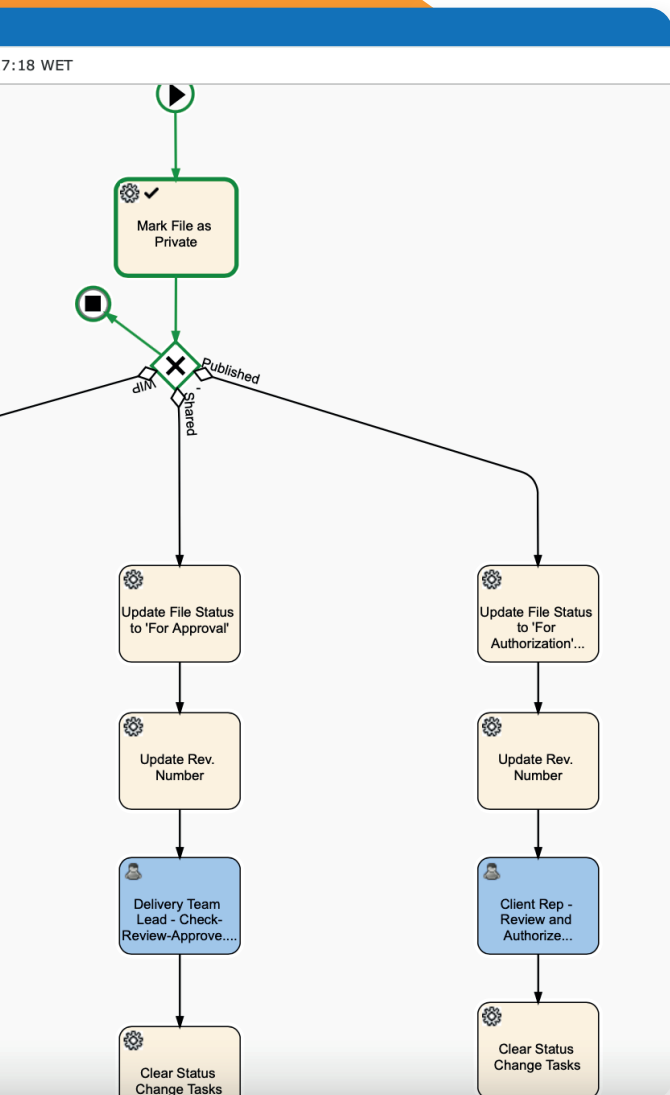
COLLABORATIVE BUILDING INFORMATION MODELING:

- ▶ Increase visibility across your projects in the design stage of construction to identify the accurate measurements and requirements of materials, dimensions, spatial requirements, reducing the likelihood of errors made in the design stage or designing in isolation of the rest of a project.



CUSTOM VISUAL WORKFLOW DESIGNER:

- ▶ The Asite Workflow Designer capability allows users to design processes which are automated and linked to the CDE. Digitise any operations in your capital projects and optimise time management.
- ▶ Create custom forms within workflows for any processes teams or workspaces need to track and control.
- ▶ Change Orders are easily tracked and managed using the Asite platform, reducing follow-up time through real-time visibility of updates or completion of any orders.
- ▶ Data is fed back through the Asite CDE, updating any changes made to a project.
- ▶ Platform enables user-specific deliverables and track the progress of teams by accessing up-to-date information on the completion of workflow stages.
- ▶ Automate status reports and document review reminders.
- ▶ Seamlessly integrate with supported plugins such as the Microsoft Office suite, Sage, SAP, Oracle, Revit, TEKLA, and more.



CONTRACT MANAGER:

- ▶ The Asite Contract Management solution allows users to manage contracts within a cloud-based environment, providing clear details around the expected deliverables of the contract while adhering to the Joint Contracts Tribunal family of contracts.
- ▶ The Contract Management solution supports FIDIC management (International Federation of Consulting Engineers). The solution works in conjunction with any workflows or automated processes implemented across the project to ensure that, in the event of any variations or Change Orders, the correct parties are automatically notified, upholding quality assurance and saving time for the user.

CON001: Contract For - Demo Contractor Organisation Status: N/A - No Status

Vishal Puri, Asite Solutions Ltd
To: Arushan Mahendrakumar 20-Dec-2019, 10:35 WET Direct Link

Adoddle NEC4 Demo Workspace

Contract Summary

Price Breakdown

Sectional Completion / Key Dates

Early Warning Register

Compensation Event Log

Contract Information

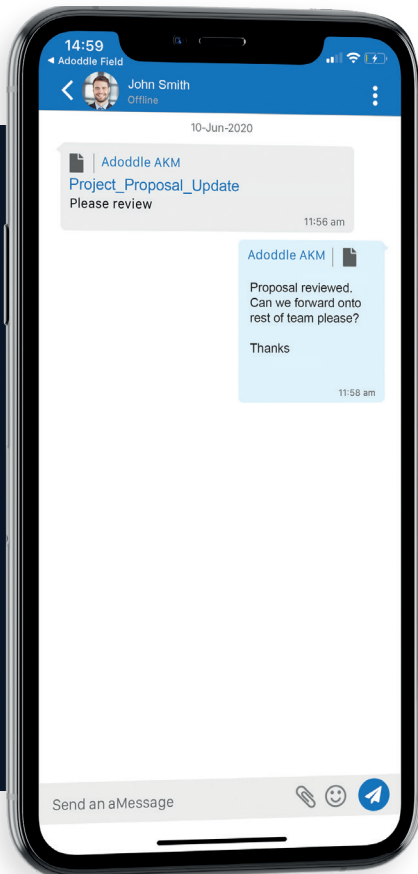
PWF ASSOCIATES

Contract Summary

Contract number	12345
Description	East Wing Library Development
Contractor	Demo Contractor Organisation
Contract type	NEC4 ECC Option C

Financial Summary

The Prices		Program
Approved Budget £	1,000,000.00	Revised D
Original Total of the Prices £	844,000.00	Start Date
Implemented Compensation Event (Prices) £	101,999.00	Original C
Revised Total of the Prices £	945,999.00	Total Add
Price Adjustment for Inflation (Option X1) £	0.00	Revised C
Revised Contract Price (inc. Inflation) £	945,999.00	
Surplus Budget £	54,001.00	
Projected Total of Prices		Projected
Unagreed Quotations £	96,000.00	Unagreed
PM Adjustment to Projected Price £	37,500.00	PM Adjust
Early Warnings £	14,500.00	EWV Cha
Projected Price Adjustment for Inflation (Option X1) £	0.00	Projected
Projected Total of the Prices £	1,093,999.00	Actual Co
Budget Remaining from Projected Total of Prices £	-93,999.00	
Percentage of Approved Budget	109.40%	Estimate
Estimated Total of the Prices		Anticipate
Anticipated Compensation Events £	0.00	Estimated
Estimated Total of the Prices £	1,093,999.00	
Budget Remaining From Estimated Total of the Prices £	-93,999.00	
Percentage of Approved Budget	109.40%	Accepted
Estimated Final Cost generated by Payment Certificates (Date)		Planned C
Defined Cost to Date £*	0.00	Variance
Disallowed Cost £*	0.00	Next Prog
Forecast of Defined Cost to Go £*	0.00	
Open EWVs affecting Defined Cost £	0.00	



SECURE COMMUNICATIONS THROUGHOUT THE WIDER TEAM:

- ▶ Siloed project processes and challenges with resource accessibility lead to time delays and escalated costs in capital projects. With the Asite platform, users can easily grant permission to view, change, and mark-up documents across their teams. Stakeholders can securely communicate with any team member within the CDE and notify them of any changes or updates to resources. This collaborative approach helps teams work together and ensures access to any resources they require, streamlining their tasks and responsibilities, leading to an increased productivity.

Reduce time-wasting, become more efficient:



a week spent on
document sourcing
and resolving conflicts



spent hunting down
project data



spent on
resolving conflict

"We have seen a huge improvement and we now have a high level of traceability of decisions and agreements made throughout the project.

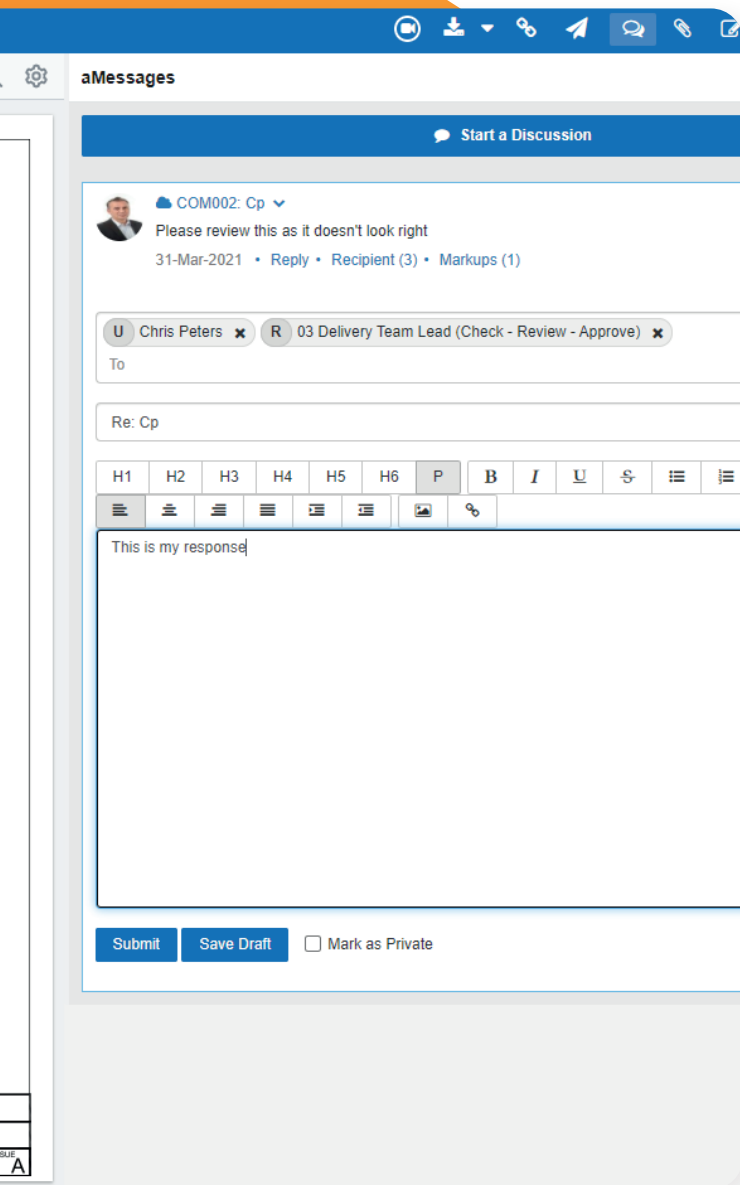
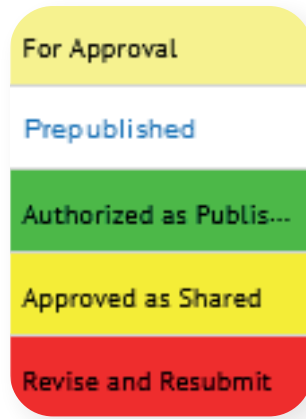
Streamlined processes, daily progress report custom form, and custom reports have had a major positive impact in capturing planned vs actual progress on site on a daily basis"

- Vikramaaditya Radhu, General Manager, Wave Infratech

With multiple interdependent processes and tasks, time management within capital projects is crucial. Stakeholders incur an additional 5.5 hours per week tracking down project data and other information relating to their project.

COMMON DATA ENVIRONMENT:

- ▶ The Asite CDE supports the sharing and distribution of data and documents across all stakeholders on a project. Individuals gain greater visibility across their projects through more secure and versatile document sharing and better access to resources needed on a project, minimizing the risk of errors.



DOCUMENT MANAGEMENT:

- ▶ Extensive search capability allows users to search keywords or folders and drill down into these to allow easy and immediate access to any documents shared in the CDE
- ▶ Collaborate across the wider team with the document mark-up tool, allowing users to overlay updates, comments, and any annotations within the document
- ▶ Version control automatically manages document updates and notifies relevant stakeholders to ensure each are using the most up-to-date information
- ▶ Complete audit trail and version control allows users to identify who has accessed, viewed, or altered a document to allow easier conflict resolution

About Asite

Asite's vision is to connect people and help the world build better.

The Asite Platform enables organisations working on large capital projects to come together, plan, design, and build with seamless information sharing across the entire supply chain.

Asite PPM is a Project Portfolio Management solution, which gives users and their extended supply chain shared visibility of capital projects. Asite APM is an Asset Performance Management solution, which allows users to keep track of their complex, ever-changing register of capital assets.

Together they enable organisations to build digital engineering teams that can deliver digital twins and just plain build better.

For more information about Asite, please contact sales@asite.com.